



# PORTABLE LIGHTING SYSTEMS FOR FIRST RESPONDERS

THE KEY TO EFFECTIVE EMERGENCY PLANNING



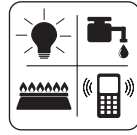
EMS



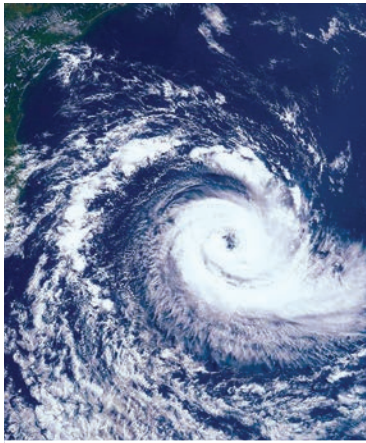
Fire Departments



Law Enforcement



Utilities



**EXTREME WEATHER** brings with it unpredictability and the necessity to plan for emergencies. EMS personnel, firefighters, utility workers and other first responders play a critical role in providing the care or assistance people need when disaster strikes. Having the right lighting tools provides the peace of mind to perform under pressure.

**EMERGENCY PREPAREDNESS** is a continual process. This is why Streamlight has created this guide to help you in identifying the most common flashlights used before, during and after a storm or natural disaster.

## ARE YOU PREPARED?

## PORTABLE SCENE LIGHTING

### PORTABLE SCENE LIGHT II

	100%	80%	60%	40%	20%
LUMENS:	10,000	8,300	6,300	4,500	2,300
RUN TIME:	2h	2.75h	3.75h	5.75h	11h

- Features a 360° articulating head
- Zero deployment
- Waterproof

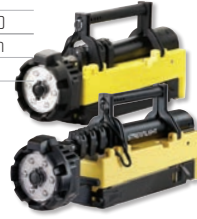


46000 | PORTABLE SCENE LIGHT II – 120V AC/12V DC – RED

### PORTABLE SCENE LIGHT/PORTABLE SCENE LIGHT EXT

	HIGH	medium	LOW
LUMENS:	5,300	2,500	1,300
DISTANCE:	410m	292m	215m
RUN TIME:	4h	9h	18h

- 90° swivel neck aims the beam
- Waterproof
- PSL extends to 72" [182.88 cm]
- PSL EXT extends to 84" [213.36 cm]



45670 | PORTABLE SCENE LIGHT – 120V AC/12V DC – YLW  
45680 | PORT SCENE LIGHT EXT – 120V AC/12V DC – YLW



## LANTERNS

### WAYPOINT®

	HIGH	LOW
LUMENS:	550	40
DISTANCE:	625m	178m
RUN TIME:	10h	82h

12V DC power cord - unlimited run time  
Emergency signal: runs 82 hours

- Pistol-grip spotlight
- Integrated stand for scene lighting
- Uses 4 "C" alkaline batteries



44900 | WAYPOINT – YELLOW

### VULCAN® 180

	HIGH	LOW
LUMENS:	1,200	350
DISTANCE:	548m	296m
RUN TIME:	5.75h	16h

- Features a 180° articulating head
- Ultra-bright blue taillights provide visibility from behind
- Rechargeable lithium ion battery



44311 | VULCAN 180 – 120V AC/12V DC – ORANGE

### E-FLOOD® LITEBOX® HL

	HIGH	MEDIUM	LOW
LUMENS:	5,300	2,500	1,300
DISTANCE:	410m	292m	215m
RUN TIME:	1.75h	4.5h	10h

- High lumen flood light
- 90° swivel neck aims the beam
- Rechargeable lead acid battery



45661 | E-FLOOD LITEBOX HL – 120V AC/12V DC – ORANGE

## HANDS-FREE

### VANTAGE® II

	HIGH	LOW
LUMENS:	350	135
DISTANCE:	118m	80m
RUN TIME:	2.25h	5h

- Easily attaches above or below brim of fire helmets
- Bright blue taillight ensures you can be seen from behind
- IPX7 waterproof to 1m for 30 minutes
- Includes one CR123A lithium battery
- Meets requirements of NFPA 1971-8.6 (2013)



69331 | VANTAGE II - WITH CR123A BATTERY

### ENDURO® PRO HAZ-LO®

	SPOT	FLOOD	COMBO
LUMENS:	160	160	235
DISTANCE:	73m	20m	---
RUN TIME:	5h	5h	4.75h

- Spot for distance, flood for area illumination, spot/flood combo for maximum output
- Includes "AAA" alkaline batteries, elastic & rubber hard hat straps and 3M® Dual Lock® reclosable fasteners
- Intrinsically safe; Class I, Div. 1



61424 | ENDURO PRO HAZ-LO - BOX - YELLOW

### SURVIVOR®

	HIGH	LOW
LUMENS:	175	60
DISTANCE:	405m	237m
RUN TIME:	5h	5h
MOONLIGHT RUNS 20 DAYS FLASH RUNS 8 HOURS		

- Intrinsically safe; Class I, Div. 1
- Includes four "AA" alkaline batteries
- Push-button switch easy to use with gloves
- Meets 500°F requirements of NFPA 1971-8.6 (2013)



90540 | SURVIVOR - ALKALINE - ORANGE

## HANDHELD

### STINGER® LED/ STINGER DS® LED

	HIGH	MEDIUM	LOW
LUMENS:	425	200	100
DISTANCE:	322m	219m	155m
RUN TIME:	3h	5.5h	10h
STROBE RUNS 7.5 HOURS			

- Stinger LED features push-button head switch
- Stinger DS LED features Independently operating head switch & tail switches
- Durable, anodized aluminum construction
- Rechargeable NiMH battery



75713 | STINGER LED - 120V AC/12V DC  
75813 | STINGER DS LED - 120V AC/12V DC

### STRION DS®

	HIGH	MEDIUM	LOW
LUMENS:	375	150	40
DISTANCE:	329m	141m	72m
RUN TIME:	2.5h	6.25h	24h
STROBE RUNS 5 HOURS			

- Independently operating head switch & tail switches
- Durable, anodized aluminum construction
- Rechargeable lithium ion battery



74412 | STRION DS - 120V AC/12V DC

**ARE YOU PREPARED?**