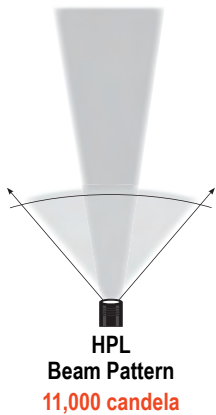


The low-profile TLR RM 1 features an HPL face cap for a longer reaching, tighter beam. It's designed to produce more candela while maintaining lumen output.

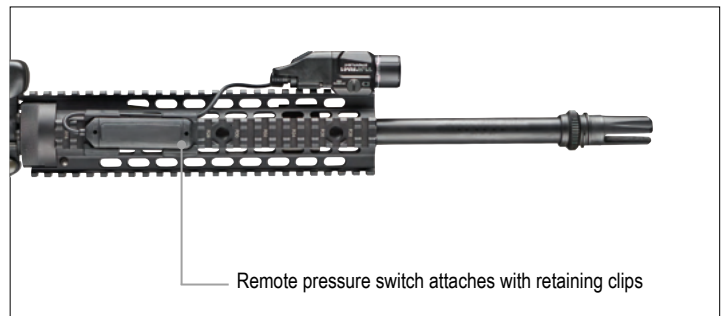
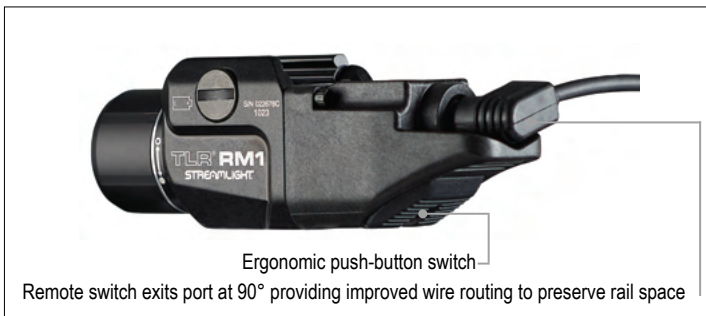
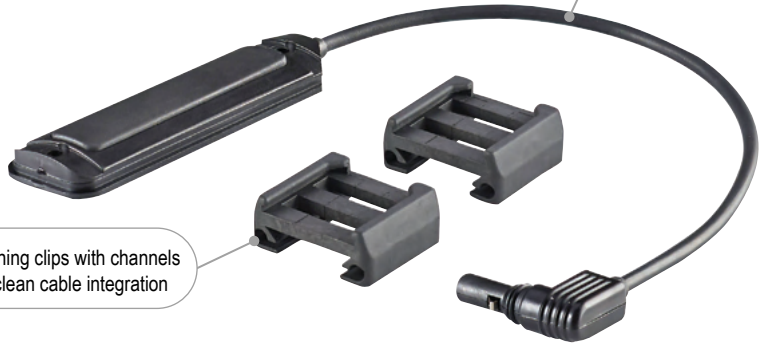
Independently operating push-button and remote pressure switches provide the security of knowing you'll always have light.



"Safe off" feature prevents accidental activation, saves batteries

Retaining clips with channels for clean cable integration

Remote pressure switch



500 lumens; 11,000 candela; 210m beam; runs 1.5 hours User-enabled strobe function; runs 3 hours (strobe)
Features HPL face cap for a longer reaching, tighter beam - produces more candela while maintaining the lumen output
Uses one CR123A lithium battery (included)
Durable anodized machined aircraft aluminum construction

IPX7; waterproof to 1m for 30 minutes
3.64" (9.25 cm); 3.02 oz. (85.6 g) with battery
Limited Lifetime Warranty Visit streamlight.com for full warranty information
#69440 - TLR RM 1 - Includes rail locating keys, remote pressure switch, mounting clips and CR123A lithium battery - Box
#69441 - TLR RM 1 - Includes rail locating keys and CR123A lithium battery - Box
#69442 - TLR RM 1 - Includes rail locating keys, dual remote switch, mounting clips and CR123A lithium battery - Box